



CHELSEA TANK FARM GASOLINE RELEASE

FACT SHEET UPDATE #4

DATE: 5/11/26

DEAR NEIGHBOR,

AS YOU MAY KNOW, MIPC IS CURRENTLY WORKING TO REMEDIATE AN UNDERGROUND GASOLINE LEAK AT OUR CHELSEA TANK FARM. THIS DOCUMENT PROVIDES AN UPDATE TO OUR EARLIER FACT SHEETS FROM: DECEMBER 31ST, JANUARY 22ND, AND MARCH 10TH.

KEY TAKEAWAYS

- Fenceline neighbors and beyond to the North, East, and South of our Chelsea facility are not impacted by this release.
- Delineation efforts continue to the West, but data and evidence demonstrates that the extent of off-site impact has largely been determined.
- Remediation efforts continue onsite with new technology and equipment deployed to increase our recovery capabilities.

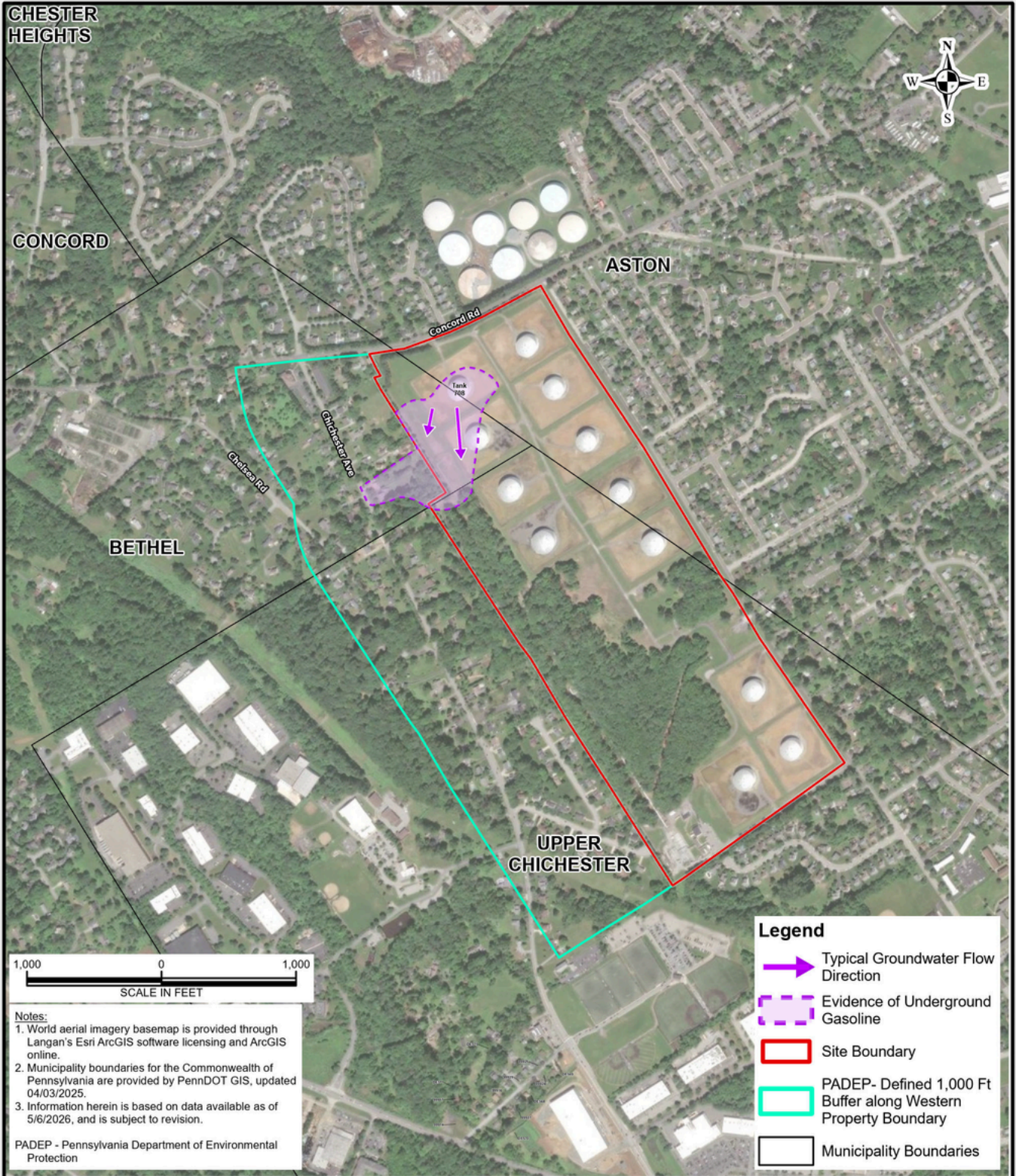
MIPC HAS:

- Installed 100 monitoring wells and continues to extract gasoline using vacuum enhanced fluid recovery (VEFR) in monitoring wells where it is encountered.
- Gathered data since December, conducted studies of the subsurface geology, and routinely monitored each well that was installed. This information allowed us to determine that the release is fully delineated to the North, East, and South of Tank 708 (the source of the leak). *Please see the map on the flipside.*
 - What does this mean?
 - Neighbors to the North, East, and South of the Chelsea Tank Farm are not affected by the release.
 - We are still working to complete delineation efforts to the West, however, data and evidence demonstrates that the extent of off-site impact has largely been determined.
- Installed noise barriers along our western fencelines in higher trafficked work areas to further reduce noise during peak work periods.
- Added additional remediation equipment, such as our solar-powered skimmers which enhance our 24/7 product recovery efforts in impacted monitoring wells.
- Conducted continuous fenceline air monitoring at multiple locations along our fenceline to monitor ambient air. Results have not exceeded the Act-2 Non-Residential Indoor Air standards.
 - Air monitoring data is shared weekly with PA Dept. of Environmental Protection for their review and analysis.
- Continued to resample residential drinking water wells on a routine schedule. None of the analyzed compounds have been detected at concentrations above even the most stringent PA standards in any of the well samples.
- Sought access to a limited number of properties in the immediate vicinity of the release area in an effort to further delineate the release and to ensure the health and safety of our neighbors.
- Engaged a board-certified toxicologist to help guide our response efforts in protecting human health and the environment.
- Continued to work in close coordination and under the oversight of the PA Dept. of Environmental Protection in all aspects.

CONTACT INFO

610-364-8426
MIPC1@monroe-energy.com
ChelseaTankUpdates.com





Notes:
 1. World aerial imagery basemap is provided through Langan's Esri ArcGIS software licensing and ArcGIS online.
 2. Municipality boundaries for the Commonwealth of Pennsylvania are provided by PennDOT GIS, updated 04/03/2025.
 3. Information herein is based on data available as of 5/6/2026, and is subject to revision.

PADEP - Pennsylvania Department of Environmental Protection

Legend

- Typical Groundwater Flow Direction
- Evidence of Underground Gasoline
- Site Boundary
- PADEP- Defined 1,000 Ft Buffer along Western Property Boundary
- Municipality Boundaries

<p>LANGAN</p> <p>Langan Engineering and Environmental Services, LLC</p> <p>1818 Market Street, Suite 3300 Philadelphia, PA 19103-3638</p> <p>T: 215.845.8946 F: 215.845.8901 www.langan.com</p>	<p>Project</p> <p>MIPC CHELSEA FACILITY</p> <p>920 CHERRY TREE ROAD ASTON TOWNSHIP</p> <p>COUNTY STATE</p>	<p>Drawing Title</p> <p>TANK 708 UNDERGROUND RELEASE INVESTIGATION - 5/6/2026</p>	<p>Project No. 220240201</p> <p>Date 5/8/2026</p> <p>Scale 1"=1,000'</p> <p>Drawn By CH</p>	<p>Figure</p> <p>1</p>
	<p>© 2026 Langan</p>			